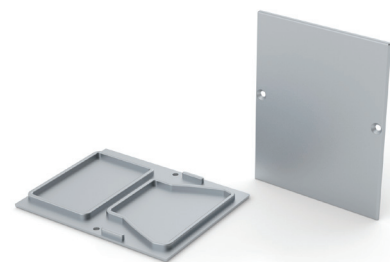
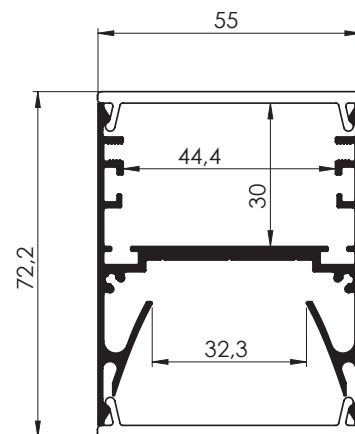


AL-DPL55
AB-PL55

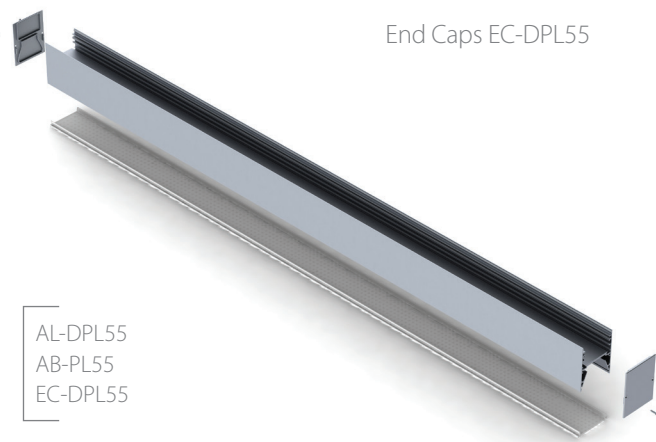
DPL55 SURFACE/PENDANT

DPL55; 55 x 72 mm

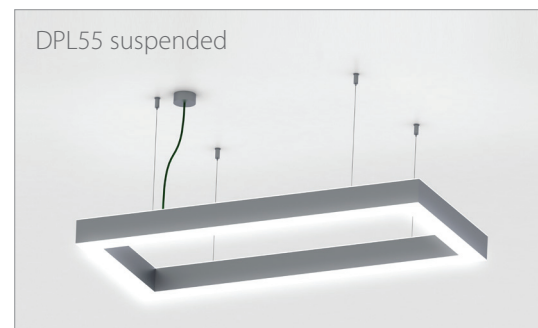
DPL55 is a new double side LED profile. This multifunctional LED profile may be both suspended or installed on the surface. Depending on your needs, it may contain two light sources (when suspended) or one high power LED with a driver hidden in the other chamber. The heat dissipation capability of this luminaire is up to 50W/m. The internal parabola assures a perfect light distribution without any light loss. Thanks to an innovatory fastening thread, the driver does not adjoin the LED shelf and so it does not overheat. This LEDs dots free design is available with a frosted and two prismatic diffusers: clear and opal. Thanks to available accessories, like linear and angle connectors, multifunctional mounting brackets and a security cable, you can mount it easily and safely with one click.



End Caps EC-DPL55



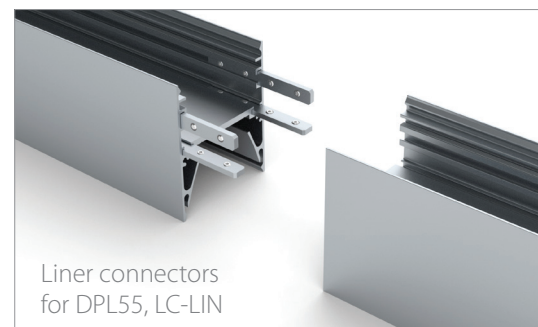
AL-DPL55
AB-PL55
EC-DPL55



DPL55 suspended



DPL55 suspended

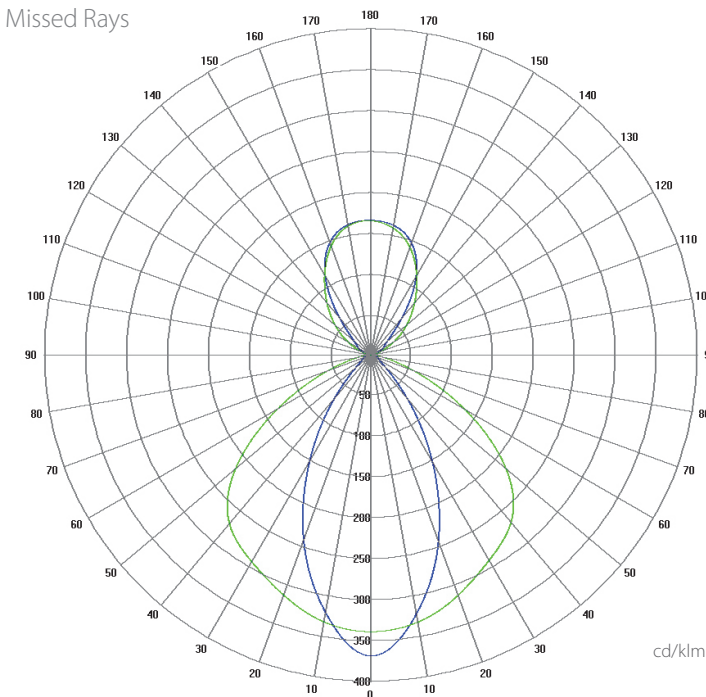


Liner connectors for DPL55, LC-LIN



90° degree connectors for DPL55, vertical and horizontal

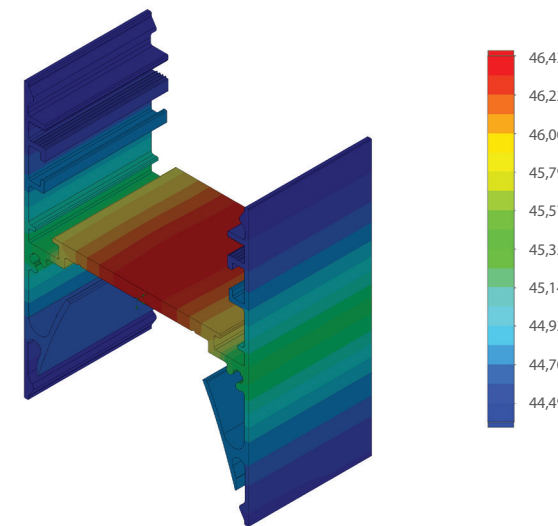
Polar Candela Distribution Plot Using Missed Rays



AL-DPL55
AB-PL55 x2
MC-DPL55



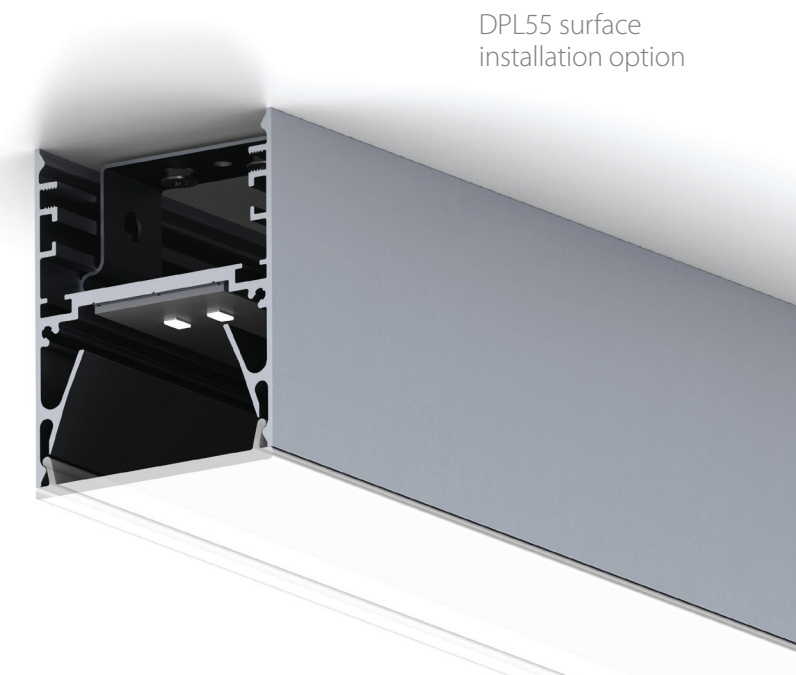
DPL55 suspended from the ceiling



Temperature (Solid) [°C]

Temperature ambient: 25°C
Total power: 55W/m
LED stripe: 30-DURIS, 10-5060

AL-DPL55
AB-PL55
30-DURIS
MC-DPL55



DPL55 surface installation option